



ANNUAL REPORT 2024

Bethany Chapel



TABLE OF CONTENTS

LEAD PASTOR.....	3
ELDERS REPORT.....	4
DEACONS REPORT.....	6
STAFF REPORT.....	7
BIBLICAL TRUTH.....	7
CULTURAL RELEVANCE.....	8
LOVING COMMUNITY.....	10
CONNECTING GROUPS IN HOMES.....	10
BETHANY KIDS.....	11
AWANA.....	12
TOT TIME.....	12
YOUTH.....	13
YOUNG ADULTS.....	13
WOMEN.....	14
EXPLORING FAITH (ALPHA).....	15
MEN.....	15
SENIORS.....	16
CONNECTION CORNER.....	16
BREAKING OF BREAD.....	17
SPECIAL EVENTS.....	17
OUTWARD FOCUS.....	19
CARE MINISTRY.....	19
COMMUNITY OUTREACH.....	20
PEOPLE DEVELOPMENT.....	24
FAITHFUL PRAYER.....	25
KEY 2024 CHANGES.....	26
KEY 2025 CHANGES.....	27
THANK YOU.....	27
MISSIONS.....	28
APPENDICES.....	34
FAMILY LIFE.....	35
STAFF, DEACONS, & ELDERS.....	36
MINUTES.....	37
2024 AGM SUMMARY OF RESOLUTIONS.....	42
FINANCIALS.....	43
TREASURER REPORT.....	59
2025 PROPOSED BUDGET.....	62

LEAD PASTOR

Dr. Paul Brushaber



Dear Bethany family,

Another year has past, and God has been good. By every objective standard, we had a great 2024. Our collective efforts combined with God's power and goodness moved Bethany forward in every conceivable way. Our mission statement - "Opening Doors to God's Truth and Love" - is being fulfilled with increased consistency and measure. Our weekend attendance grew almost 20% to over 475 (Fall 2024 compared to Fall 2023). Our online presence continued to expand. Other ministries grew as they assimilated our growing congregation, connecting hundreds of people to each other and to God and His Word. We hit our offering target as well, giving us the confidence to make key decisions in 2025 and beyond as it pertains to expanding ministry, expanding missions support, adding to our staff, and renovating our facilities for future and greater effectiveness.

The following is a compilation of the many ways in which we are together fulfilling our mission and values. It is not complete as there are so many ways in which Bethany people are making a difference outside of the walls of the church as well as within its walls. But this is a short walk through 2024, just to remind us all of what has been done, and where we are on the journey of creating a church that Jesus can be pleased with.



ELDERS REPORT

Aaron Mackie, Chair



As we reflect on the past year, we, the Elders of Bethany Chapel, are deeply grateful for God's unwavering guidance, faithfulness, and abundant blessings. This report offers a summary of the key activities, initiatives, and spiritual direction we have provided to the congregation throughout the year.

Our ongoing mission is to deepen our congregation's understanding of Scripture while strengthening our faith as we reach out to others with the gospel. This year, our efforts remained focused on encouraging personal growth, discipleship, and meaningful community engagement.

A core aspect of our role as Elders is providing prayer and pastoral care to our congregation. Throughout the year, we have been actively involved in praying for individual members and their families, particularly during times of illness, loss, or personal crisis. Under the guidance of Mary Dyck, pastoral care visits were regularly made to those unable to attend services, fostering a deep sense of connection and care.

In partnership with ministry leaders, the Elders worked diligently to assess and enhance programs that serve both our congregation and the local community. Through outreach events, charity drives, and community service initiatives, we were committed to demonstrating Christ's love through tangible actions. We continued to encourage our congregation to live out their faith through acts of service, reflecting the heart of the gospel.

A significant responsibility this year was overseeing the financial stewardship of Bethany Chapel, in collaboration with the Deacons. Together, we provided guidance on budgeting, ensuring that resources were allocated wisely and in accordance with our mission and values. We are incredibly thankful for the generosity of our congregation, which has enabled us to continue supporting our ministries and outreach efforts.

Promoting unity and fellowship within the church body remains one of our top priorities. Through regular social events, shared meals, and gatherings, we were able to foster stronger bonds among members. Bethany Chapel has been blessed with an increasing number of newcomers this past year, drawn by the strength of our Biblical preaching and our God-honouring community.



ELDERS REPORT

As we step into a new year, the Elders are excited to build upon the foundation laid in the past year. We remain committed to cultivating a culture of love, faith, and service within our church, always striving to reflect the grace and mercy of Christ. We look forward to partnering with our congregation as we grow together and share the message of the Gospel, both in our community and beyond.

We are deeply thankful for the steadfast support, prayers, and dedication of our church family. May the year ahead bring continued blessings as we work together to fulfill God's calling on our lives.



DEACONS REPORT

Andrew McCausland, Chair



Bethany Chapel continues to thrive. God is working powerfully through our church, impacting lives in our local community, across our city, and through international missions. Attendance has continued to grow, and we celebrated many baptisms and commitments to follow Christ in 2024. Alongside this spiritual growth, we completed and advanced several key initiatives that reflect our commitment to stewarding God's resources for His glory.

Facility and Infrastructure Improvements

This past year, we completed significant capital improvements, including:

- Renovations to the gym and basement youth space
- Upgrades to I.T. systems
- Completion of our multi-year vision and detailed 2025 renovation plans for the Bethany Chapel building
- Coffee and tea quality and efficiency upgrades

Enhanced Collaboration and Governance

Our quarterly joint meetings with the Elders have fostered improved communication and collaboration among Deacons, Elders, and staff leadership. We continue to address policy gaps and work on rationalizing our policies for clear, consistent, and God-honouring governance.

Looking Ahead in 2025

We anticipate both challenges and opportunities in 2025 as we implement our ambitious plans. The upcoming budget reflects a joint commitment to:

- Increased staff spending for better support
- Expanded ministry spending aligned with our growing attendance
- Significant capital spending to fund renovations and asset replacement

We are grateful for our dedicated staff and volunteers, whose talent and energy drive these initiatives, serving as the body of Christ and demonstrating His love in our community and beyond.

STAFF REPORT



BIBLICAL TRUTH

We believe that the Bible is the only source of truth that can help us to live the lives for which we were created.

There are a lot of great organizations that want to make a difference in the world, but churches look both at the needs of the world today and into eternity as well. There is no true lasting help for people that does not take into consideration their spiritual lives and destinies. We continue to build on Bethany's rich history of commitment to truth in a church world, and world in general, that keeps drifting away from absolutes. In 2024, we walked through many key series such as Bethany Values—a Lasting Foundation; HIStory...Lessons from the Old Testament; The Path to the Cross; When Life Gives You Lemons; and God's Plans for Christmas. The Bible was also taught through Sunday School, AWANA, and all of the Connecting Groups: from youth and young adults to seniors and every age in between.



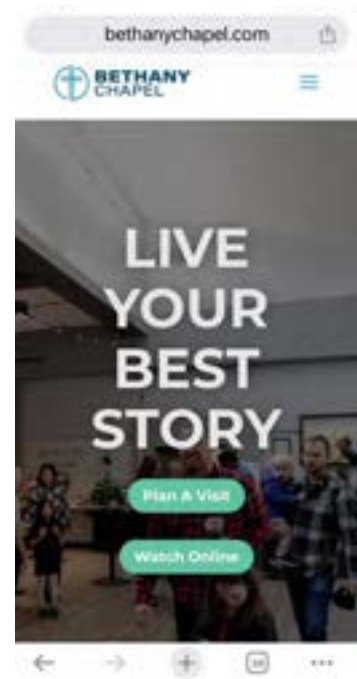


CULTURAL RELEVANCE

We believe that changing our methods without compromising our message is essential as we bring timeless truths to each new generation.

Cultural relevance is not a program or a ministry; rather, it is a way of thinking. In the business world, the equivalent would be "best practices." Churches aren't always great at this because we have a timeless belief system which tends to make us feel like change is bad or unnecessary. The reality is that the manner in which we reach and connect people does change over time based on a changing world and culture.

Relevance permeates everything. It's why we sing contemporary music and have a worship band instead of an organ and choir. It's why we improved our coffee and tea for after-service fellowship. It's why we began renovating the building five years ago and continued with the gym in 2024, with plans for much more in 2025 and beyond. It's why we updated our website and the look of our communications. It's why we end the sermon with applications. It's why our kids have a pool table in the youth room and why they play dodgeball after church. Relevance is about creating a relatable culture and giving people an experience that they want to be a part of.





CULTURAL RELEVANCE

The most significant change to our facility in 2024 was the renovation of the gym, which was completed in July/August. A much-improved aesthetic was achieved through new paint, doors, hardware, signage, and reupholstered sound panels. Beyond aesthetics, the gym's functionality was greatly enhanced with the installation of new, more efficient basketball and volleyball nets. These improvements mark just the beginning as we have ambitious plans to continue modernizing our facilities in 2025 and beyond.





LOVING COMMUNITY

We believe that loving and grace-filled relationships fill our need for connection and touch the heart of a broken world.

There is a striking connection between social connection and religious belief. It is much easier to believe something if others believe it as well, especially if those others are our close family and friends. Jesus commanded love for God and our neighbour, stating that the latter is our greatest testimony to the world around us.

Most of our church's ministries are listed here because there is a relational/social component connected to an opportunity to learn and grow. The Sunday sermon is delivered to a large audience, but a connecting group with 10-12 people in it allows a loving community aspect to flourish. The following includes those connecting groups in 2024.



CONNECTING GROUPS IN HOMES

Connecting Groups in homes continue to be a vital part of our church community, providing a space for Bible study, prayer, and walking alongside one another in life. We currently have eight groups meeting in homes, and one gathering at Bethany.

We are constantly connecting individuals with these groups and are working with others to find a place where they will feel most comfortable. We recognize that some are in various life stages seeking connection, and we continue to work to facilitate gatherings to meet these needs.

We are grateful for how God is working through these groups to deepen relationships and grow faith within our church family.



BETHANY KIDS

2024 was another busy year in Children’s Ministry with an average of 64 kids attending Sunday School each week, and a high of 88 in attendance on Kick-off Sunday! We are so grateful for the number of families who have chosen Bethany as their home church.

Through our various programs and events, we have seen spiritual growth, deep engagement, and meaningful connections being made. This was achieved through a number of events, including: a special Good Friday Service for the children, reflecting on the sacrifice of Christ; a joy-filled Easter Sunday featuring an egg hunt with eggs filled with scripture; four BLAST dodgeball tournaments, introducing the younger



children to the BLAST-aged Kids (Grades 5-6) and the Grade 6’s to the younger Junior High students; our annual Christmas performance that retold the Scrooge classic; and a child-focused Christmas Eve celebration where the Christmas story was shared and the children enjoyed music, games, activities, and treats.

During the summertime, we also offered two engaging week-long camps that also focused on the Gospel. Our sold-out Drama Camp saw 23 children from Kindergarten to Grade 6 engaged with prop-making, storytelling and performing, culminating in a week-end performance for all to enjoy.



The following week, we had 71 children exploring an underwater adventure, with a focus on the story of Jonah, during our week-long Vacation Bible School camp (VBS). This camp included children who were as young as pre-kindergarten, up to Grade 6.





LOVING COMMUNITY

As part of our desire to continue to introduce and deepen our children's relationship with Jesus, we changed our Sunday curriculum from the Gospel Project to GROW. The Gospel Project served us well for a number of years so it was time for a change. We've received much positive feedback with the GROW curriculum as the content is engaging and has students open the Bible to read together each class, whereas our old curriculum didn't encourage this.

Looking ahead, we are excited for another year of ministry, growth, and fellowship. Thank you to everyone who has been a part of Bethany Kids – whether as a volunteer, a parent, or a supporter. Your dedication and love for these children is invaluable. We look forward to seeing what God has in store for the coming year!

AWANA / FAMILY NIGHT



Awana continues to be a vibrant and impactful connecting group, meeting on Friday nights and serving children ages 3-12. The program facilitates faith formation and discipleship through engaging activities such as games, songs, activities, and Bible verse memorization. This year, we have seen strong participation and enthusiasm from both children and their families.

Our Friday Awana nights provide a welcoming and structured environment for children to grow in their faith while also providing a time for parents to connect and build relationships during family time after the program.

As we continue to grow, we hope to strengthen family engagement and expand outreach efforts. May Awana continue to be a place where young hearts are nurtured in faith and community.

TOT TIME

Tot Time is a place for parents/caregivers and their little ones from 0-5 to gather for two hours of fun and connection. This volunteer-led group offers an hour of free play in the gym, followed by a snack, story, songs, and a seasonal craft. This year has seen many familiar faces attending the group, as well as welcoming new families into the community. Week after week, there is a regular group of 8-10 families and 15-20 children, providing an opportunity for the little ones to play, as well as a place for friendships and support networks to grow among parents and caregivers.





YOUTH

This past year has been one of growth and encouragement for our youth ministry. Our largest event in the fall was the Christmas Banquet, with close to 90 students in attendance. The weekly ministry numbers remain very healthy, and we are grateful to see youth from other churches joining us as well.

Junior High is averaging 50-55 students weekly, including those who attend alongside their Awana siblings. Senior High has experienced transition but remains strong. A large group of Grade 11/12 students attends regularly, and efforts continue to integrate Grade 10s into Sunday night gatherings.

A highlight of the year was the three-day Spring retreat at Salem Acres, with 84 students attending. The time away provided a wonderful opportunity for leaders - both new and returning - to build relationships with students and strengthened retention among older youth.

On the missional front, some of the youth travelled to Thailand for two weeks to gain a better understanding of linguistic missions through Wycliffe Thailand and Wycliffe Canada. This trip also gave Grade 11 & 12 students the opportunity to experience how Christians live in a predominantly Animist/Buddhist culture. The plan is to provide this opportunity to our Senior students (grades 11 & 12) every two years.



YOUNG ADULTS

This year has been a season of growth and deepening faith in our Young Adults Ministry. A group of around 15 consistently gathers each week, engaging in worship, a message, and meaningful discussions to explore faith on a deeper level. A transition from meeting in homes to primarily gathering at the church has provided a more stable environment.

Throughout the year, studies have included the book of Isaiah, exploring the spiritual disciplines of prayer and solitude, and the topic of Hermeneutics—learning how to faithfully interpret Scripture.



WOMEN

In 2024, Bethany's women's ministry experienced a year filled with opportunities for connection, growth, and fellowship. Three evening events were held, each bringing together 80–90 women for community, a key message, and some fun. February's lively paint night sparked creativity, October's health-focused evening provided valuable insights, and November's Advent gathering invited reflection on the deeper meaning of the season. In May, over 70 women attended the half-day Restore conference, which explored how God places His treasure in broken clay pots like us.



Paint Night



Advent



Health Night

Bible studies continued to be a cornerstone of spiritual growth throughout the year, with *A Table in the Wilderness* drawing 30 participants, *Jesus and Women* engaging 35–40 across morning and evening sessions, and an incredible 109 women diving into Revelation in the fall—a study that continues into winter of 2025.

Additionally, a new summer walking and hiking program encouraged connection and appreciation for God's creation, with biweekly Wednesday walks and alternating Tuesday hikes attracting 7–15 participants per outing. We are encouraged to see God working in the lives of the women at Bethany, and their invited guests, deepening faith and strengthening relationships throughout the year.



Bow Valley Hike



South Glenmore Park Walk



Powderface Hike



EXPLORING FAITH

From April to June, we had the joy of running Alpha, an evangelistic course that seeks to introduce the basics of the Christian faith through a series of videos, followed by a time for discussion. This session welcomed between 35-50 attendees, including Bethany volunteers.

Following Alpha, a team has been leading a bi-weekly Bible study through the book of Matthew. This began in the fall of 2024 and continues into 2025. The group currently includes five people. In addition to the study, the group has gathered for socials, allowing more time for personal relationships to grow.

We are so thankful for all who participated and served in Alpha this year. It is a privilege to walk alongside those exploring faith, and we look forward to what God will continue to do in their lives.

MEN

The **Men's Discipleship Group** continues to be a consistent place to seek spiritual growth and fellowship at Bethany. They gather online each week, with an in-person session at Bethany Chapel once a month. Their time together focuses on study and prayer, as they seek God's wisdom and strength in their lives. Attendance ranges from 7 to 14 men, and deep connections and spiritual growth is fostered in this group.

In addition to our weekly discipleship gatherings, the **Men's Breakfast Committee** has been instrumental in fostering fellowship and encouragement, with monthly Saturday morning gatherings during the school year. These breakfasts feature a short message, followed by discussion. Topics are practical and relevant, including a spring series on *Uncomplicated Spiritual Disciplines for Men* and a fall/winter focus on *Loving Your Neighbour*. 2024 was our best year yet, with growing attendance, especially among younger men and boys. On average, we're seeing between 60-65 come out on a Saturday morning to enjoy time together.



SENIORS

Our Seniors' Ministry has been a source of connection, outreach, and encouragement for many. During 2024, we offered four Seniors' Socials throughout the year, welcoming an average of 80 people. These events provide a wonderful opportunity for fellowship, as well as an opportunity for outreach as many invite friends. Worship music is sung, a message is shared, and participants have a time for discussion afterwards.

In October, we also hosted a free Seniors' Game Time and Lunch, where nearly 50 seniors enjoyed a morning of board and card games, followed by a delicious meal. It was a time of laughter, friendly competition, and meaningful connections.

Our Grandparenting Ministry continues to flourish, with those who are eager to grow in their role as an intentional Christian grandparent. Equipping Intentional Grandparents saw 33 participate in the winter session (a carry-over from the fall start in 2023), and 16 participants in the fall with the introduction of Volume 2.

We are grateful for all who participated, volunteered, and supported these ministries, and we look forward to another impactful year ahead in 2025!



CONNECTION CORNER

Connection Corner is a time of connecting with others through various activities offered throughout the year. Our diverse sessions started off with Card Making, Sewing, Crafts and English Language Learning (ELL; formerly ESL), and added "Mixed Bag" (breadmaking, cake decorating, painting, and needle felting) in the spring.

After a fall break, the Card Making, Sewing and ELL sessions continued, and a showing of the latest season of The Chosen was added. Our Sewing crew created some ever-popular rice bags for sale at the Christmas Market last year, with the proceeds going to our Care Fund.

We look forward to continuing to build community and foster creativity and learning through these unique gatherings.





BREAKING OF BREAD

This connecting group faithfully meets weekly to celebrate the Lord's supper. They read Scripture together, sing hymns, and spend time in prayer. Attendance has remained fairly steady in 2024, with an average of 19 people participating.

SPECIAL EVENTS

Throughout the year, Bethany hosted a variety of special events that brought our community together in meaningful ways, strengthening our bonds of fellowship, service, and worship.

In May, **Serve Day** united a dedicated team of volunteers who generously gave their time to enhance our shared spaces. From cleaning and organizing the kitchen to planting flowers and refreshing outdoor areas, their efforts ensured that Bethany remains a welcoming and vibrant place for all.



Our **Worship Night** was a powerful evening of praise and reflection, drawing 150 attendees who came together to lift their voices in song. The energy and sense of unity in the room were a testament to the deep faith and connection that define our church family.



LOVING COMMUNITY

The **Fall Kick-off** marked the beginning of a new season with a joyful celebration. A lunch for all, engaging activities for children, and opportunities for fellowship made this event a highlight of the year, setting the stage for a season of renewed participation and engagement.



As the year drew to a close, the **Merry & Bright Carol Night** offered a heartwarming conclusion to our annual gatherings. Families and friends joined in singing beloved Christmas carols, sharing in a faith-filled story time for children, and celebrating the joy of the season together.



Each of these events played a significant role in deepening relationships, fostering service, and creating lasting memories within our Bethany community. We look forward to continuing these traditions and welcoming even more opportunities to come together in faith and fellowship in the year ahead.



OUTWARD FOCUS

We believe that reaching beyond ourselves reflects the value of people as well as God's desire to be in a relationship with every person everywhere.

We want every part of Bethany Chapel to have an outreach focus - Sunday mornings, connecting groups, etc. The ministries listed below are the other ways in which we touch lives both within and outside of our weekends and connecting groups.

CARE MINISTRY

Our Care Ministry involves several facets to caring for the body of Christ. These include: visitations, funerals and memorial services, grief support, prayer, and day-to-day care. With a long list of individuals needing care and support, this vital ministry is truly a team effort.

Visitation Team

Our Care Ministry is supported by 18 dedicated volunteer visitors who provide companionship, support, and encouragement to those in need. Through regular visits, they offer a compassionate presence, fostering meaningful connections with those who can no longer attend in-person. This team also delivers plants at Eastertime, as well as at Christmas, serving as a reminder to the recipients that they are cherished members of our church family and are not forgotten.



Bob & Margaret Heggart

Funerals and Memorial Services

Our Care Ministry also supports families when they experience a loss. This past year, several in our congregation lost loved ones. We are thankful to be able to support them through the process of planning and preparing a service, as well as to offer overall support during their grief.

GriefShare

Planning also began in 2024 for a new GriefShare program, which launched in January, 2025. Led by three dedicated facilitators, the 13-week program has begun, offering essential support to 13 individuals as they navigate their journey through grief.

Prayer

Prayer is an essential part of our care ministry, laying our petitions before the Lord, as well as encouraging others through whatever struggle they may be experiencing. You can find more about prayer at Bethany further in this report.



Day-to-Day Care Ministry

Each week, new pastoral care needs arise to support and walk alongside those in need. This includes hospital visits; supporting individuals dealing with grief; visiting families with new babies; providing encouragement to those facing life struggles, mental health challenges, or physical and spiritual hardships; and praying with and for those who seek comfort and guidance. The needs are great and it is an honour to lift up the body of Christ.

COMMUNITY OUTREACH

This past year has been a remarkable journey of community engagement, support, and shared trust, both within Bethany and in the surrounding neighbourhoods. The strong relationships built with community members, particularly with the women and their families, speak to a legacy of care they have received from Bethany. Our outreach efforts extend to Lincoln Park Low-Income Housing, senior residents in Bethany Village, and families in Lincoln Park, Glamorgan, Cyprus Villas, Shaganappi Housing Complex, Sarcee Co-operative Housing, and beyond.

Partnerships and Funding Support

Building partnerships with various social agencies in the city has been an incredible privilege. These collaborations are grounded in mutual respect, trust, and a shared commitment to serving those in need. The generosity of our funding partners has been instrumental in supporting 35 families, and about 85 children.

Brown Bagging contributed approximately \$15,000 to provide food supplements for a lunch program that we offer through Bethany and **I Can for Kids** donated \$24,000 in grocery gift cards for us to disperse to families in need.



We are thankful for the dedicated volunteers who shop for the food for our lunch supplement program every other week, as well as those who help compile these essential food packages. We are also grateful that Mary Dyck has been entrusted to allocate the funds where they are best needed. It is a great blessing to serve together to give these families a “help up” with food security in these difficult times.

Lincoln Park Community Engagement

Calgary Housing continues to support our work by providing space at 36 Lincoln Park Way, where we host **Touch Base** and **Threads** on Wednesday afternoons. Touch Base remains a meaningful platform for connecting with ladies in the community, inviting participants to Bethany’s programs, and to enter into meaningful discussions about our faith. Threads is a “boutique” that offers essential clothing for families for a nominal fee. This is possible thanks to the generous donations from our Bethany community. This year, we were blessed with additional volunteers from Bethany to work alongside our consistent community volunteers for these programs.



Touch Base

Tax Clinic for Low-Income Families

In March, we once again hosted a community Tax Clinic, offering tax return preparation for low-income families. We are deeply grateful for our returning accountant, as well as new volunteers who stepped up to assist. Their generosity and expertise were greatly appreciated by the families we served and we look forward to continuing to offer this much-needed service in 2025.

Tuesday Connection Corner and Christmas Market

Once again this year, our Tuesday Connection Corner culminated in another successful Christmas Market. This year, we hosted 40 vendors and welcomed 200–300 visitors, creating a vibrant and welcoming atmosphere. The variety of goods was well received, and many vendors generously donated to our Care Fund.

Community Pantry and Gift Card Support

Bethany’s Community Pantry continues to be a busy and vital hub. Each visitor is registered, their needs assessed, and, when appropriate, offered prayer and additional support. One of our key partnerships has been with the Elbow Valley Healing Clinic, which serves a largely Indigenous community through medical and birthing care. Social workers and nurses regularly visit us to collect food for families in urgent need.

We deeply appreciate the generous food donations from the Bethany family and the occasional support from The First Church of the Nazarene, whose church-wide food drives help keep our pantry stocked.

Good Food Boxes Program

The Good Food Box program remains a valuable monthly initiative, promoting food security in our community. While primarily a user-pay program, we also provide boxes for families in need within Bethany and within our community, funded through the Care Fund.

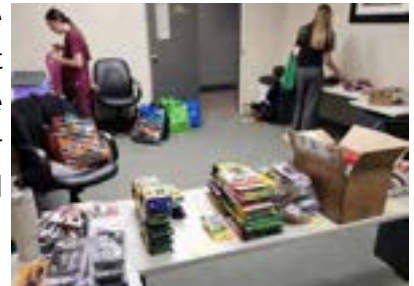
Camp Sponsorship

This past summer, we had the privilege of sponsoring 13 children to attend Salem Acres Camp. We are thankful for a \$1,000 grant from the Camp Okotoks Society to help offset the cost. The children thoroughly enjoyed their experiences, and we are grateful for the opportunity to help make summer camp a reality for them.



Back-to-School Supplies Project

Thanks to the generosity of our church community, we successfully hosted another Back-to-School Supplies Project for low-income families. Donations enabled us to assemble 45 complete school kits, along with additional supplies for younger children. This initiative significantly eased financial burdens for families, and their gratitude was heartwarming.



We are filled with gratitude for the support, generosity, and dedication of our volunteers, partners, and donors. Together, we are making a meaningful impact in the lives of many families and are being the hands and feet of Jesus to our neighbours. We look forward to continuing this vital work in the coming year and deepening our connections within the community.

OPERATION CHRISTMAS CHILD

Operation Christmas Child was a tremendous success this year, thanks to the generosity and dedication of our Bethany community. Through the kindness of our congregation, we packed an incredible 153 shoeboxes, bringing joy and hope to children in need around the world. As a designated drop-off center, we were also able to collect a total of 477 shoeboxes, reflecting the wider community's spirit of giving. Thank you to everyone who contributed, volunteered, and supported this meaningful outreach!



ELL

During Tuesday Connection Corner, we offer an English Language Learning class (ELL). This class continues to be a welcoming space where participants can build friendships and improve their English skills through engaging conversations. The program focuses on current events, Canadian traditions, English expressions, and shared experiences, using a mix of small and large group discussions and interactive games. Where appropriate, topics related to the Christian faith are introduced and thoughtfully explored.



Attendance ranges from 5 to 15 students per session, representing diverse cultural and linguistic backgrounds, including Chinese (Mandarin and Cantonese), Korean, Iranian and Afghani (Farsi), Haitian (French), Brazilian (Portuguese), as well as South and Central American and Mexican (Spanish) speakers. Participants come with a wide range of English proficiency, from beginner to advanced

levels, but each is grateful to find a place to practice speaking. Through the dedication of the eight-person volunteer team and the enthusiasm of the students, the program continues to be a valuable space for building language skills, friendships, and cultural understanding.

VETERAN'S FOOD BANK

For the second consecutive year, Bethany proudly supported the Veterans' Food Bank, reinforcing our commitment to those who have served our country. In appreciation of the generosity of our community, this year's donation drive saw an overwhelming response, surpassing expectations and making a meaningful impact. The contributions provided essential food and supplies to veterans in need, ensuring they receive the support and care they deserve. We are grateful for the continued compassion and dedication of everyone who participated.





PEOPLE DEVELOPMENT

We believe that discipling people into their full potential as Christ-worshippers is the best way to expand God's influence in our world.

This is always a very aspirational value in a volunteer organization. It is why we help to pay for education for our staff. It is why we hold conferences throughout the year for congregants, whether it be a women's event or a Grandparenting Summit. Every church is deeply dependent on the gifting of the whole body. Staff do a lot of work, but the reality is that Bethany would grind to a halt in days were it not for the hundreds of volunteers that are involved regularly. Staff are here to organize and lead and teach, but it takes the whole body to fulfill the mission.

Not everyone is gifted to do everything, and people trying to serve in the wrong places is never a good idea. But the best way to know your gifting is to have others observe you or to simply serve and see how God uses you. Many churches talk about the 80/20 rule...that 80% of the work is done by 20% of the people. Surely we could use more help in many areas, but Bethany truly has a spirit of volunteerism, and it shows every day.





FAITHFUL PRAYER

We believe that faithful prayer and prayerful faith unleash the activity of the most powerful Person in the universe.

Bethany is a community deeply rooted in prayer, believing that God not only hears our prayers, but delights in answering them. Throughout the year, we have seen prayer continue to shape and strengthen our church family.

Several Bethany groups gather weekly in prayer, including our new **Prayer Warrior Moms**, who pray Scripture over their children, and a dedicated **Grandma Prayer Team**, whose six members faithfully intercede for their grandchildren. Our **staff team** also begins each meeting by praying over individual congregants, ensuring our church family is continually covered in prayer.

Prayer also remains a core part of our weekend experience. **Pre-service prayer gatherings** create a worship-filled space focused on Scripture and seeking God's presence. **During service**, our **elders** are available to pray for healing, while a dedicated **prayer team** intercedes for various needs that are brought forward.

We are deeply encouraged by those who faithfully pray for Bethany, including the 146 individuals who receive and respond to our **weekly Prayer Newsletter**, lifting up both needs and praises. Through these prayers, we continue to witness God's powerful movement in our community.

As we reflect on the past year, we are filled with gratitude for the ways God is working through the prayers of His people. We look forward to another year of seeking Him together, standing firm in faith, and witnessing His mighty works.

Thank you to each and every person who has prayed for Bethany—your prayers are making a difference!



KEY 2024 CHANGES

2024 was a year of significant staff additions at Bethany, bringing fresh energy and expertise to our team. We welcomed Jen Brum to lead Women's and Seniors Ministries, Marie Pinkle as our new Bookkeeper, Shawntel Brooks as Administrative Assistant, and Maria Hunter as a Custodian. Each of these individuals has already made a meaningful impact, and we are grateful for their contributions. Additionally, Mary Dyck was able to fully transition to her new role as Care & Community Director, and Lisa Hicks stepped into the position of First Impressions Director, a role dedicated to enhancing the experience of church visitors. In a pivotal leadership move, Glen Bailey joined as Operations Director, ensuring the continued smooth functioning of our facilities and processes.

A major technological upgrade took place this year with the transition to Rogers high-speed connectivity, which included the installation of new telephone system wiring. This shift allowed us to move all church files from vulnerable local file servers to secure cloud-based storage, significantly enhancing data security and efficiency. Multi-factor authentication was implemented for all users, adding an extra layer of protection against cyber threats.

Furthering our commitment to safety, the Plan to Protect syllabus was updated and offered by Rachael Stewart this year, ensuring that our policies remain current and continue to provide a secure environment for the vulnerable and volunteers alike.

The fall of 2024 marked the launch of our new website and brand, which has received positive feedback, particularly for its improved navigation and the use of our own community photos. We also produced a print directory to better connect our congregation.

This year saw strong rental income from both our parking spaces for MRU students and increased building rentals. The facility remains well-utilized, and we extend our gratitude to our custodial team for their dedication to keeping the space clean and organized for all events and services. Facility upgrades, including enhancements to the gym and functional equipment improvements, contributed to the ongoing maintenance and usability of our space.

Finally, we are deeply thankful for the continued generosity of our congregation, which has allowed us to sustain and grow our ministries. Through faithful giving and stewardship, we have been able to fund essential initiatives and maintain the vibrancy of our church community.

KEY 2025 CHANGES

2025 is shaping up to be an exciting year of expanding opportunity and continued change. As we move forward, we are hoping to strengthen our team by hiring a Pastor of Ministries, providing leadership and support to our ministry staff.

Additionally, a long-term facility renovation plan will be completed, offering a glimpse of the scope, timing, and cost of our ongoing facility renovation. We are already seeing the benefits of recent renovations, enhancing both our ministry efforts and rental opportunities. With this momentum, we look forward to making even greater progress in 2025.

We are grateful for the continued faith and support of our community as we step into this next season of growth and transformation.

THANK YOU

2025 is a milestone year for Bethany Chapel as we celebrate 75 years of faithfully following Jesus together. Throughout the decades, countless individuals have contributed to shaping our church into the loving, Christ-centered community it is today. We invite you to join us on Sunday, June 8th, for a special anniversary celebration and church-wide lunch as we reflect on God's goodness and the many ways He has worked through His people. This is a time to honour our shared history, rejoice in the present, and look forward with hope to all that God has in store for the future.

We are deeply grateful for each person who calls Bethany Chapel home. Your generosity, service, and commitment to sharing God's love make a lasting impact in our church and beyond. Though we have not listed individual names in this report, we recognize that every act of service—big or small—plays a vital role in building a thriving, God-honoring church. Thank you for being part of this journey. May we continue to walk together in faith, growing in love and service for Christ and one another.

"We always thank God for all of you, remembering you in our prayers."

- 1 Thessalonians 1:2

MISSIONS

Lyle Simpson, Chair



The mission presented by Jesus Christ to his disciples is for more than official missionaries. Your mission may look very different than your fellow believer's mission, but you are not exempt from being "on mission." I say this as an encouragement. Excitingly, we are all called to further God's kingdom and be ambassadors for Christ. The Missions Committee has seen Bethany Chapel "official" mission workers drop in number over the years, but we believe that everyone has a calling for being on mission. Whether in your home or workplace or friendship circles, living out your faith in Jesus Christ and presenting the good news of God's peace towards mankind IS your calling.

Many thanks to those who pray for Bethany's mission workers (and other missionaries). Please continue to do so as places from Ecuador to Canada, the Middle East to Calgary, grow in hostility towards God.

COMMENDED WORKERS *(financially supported)*

Amy O.

Together with local teammates, and under the leadership of the local fellowship, Amy is the general director of a ministry training program in the Middle East. She is passionate about the health of the church and is involved in counselling and inner healing prayer ministry. She feels privileged to also be able to help train others in these areas, not only in the country she ministers in, but also in several neighbouring nations. She loves worship, mentoring, and anything to do with developing leaders. She is excited about what is coming out of the church in the Middle East, which will enrich and add greatly to the global church family.

Vanessa Kordupel - Inter-Varsity Christian Fellowship (IVCF), Alberta

Vanessa serves with Inter-Varsity Christian Fellowship in Calgary, with a focus on senior high school students. She ministers to students, both Christian and non-Christian, to make God known in a relevant way. Schools are a challenging mission field, full of competing ideologies; students are searching for identity and need to know the good news of Jesus Christ. Vanessa mentors students, hosts Bible studies that explore how Scripture is relevant to students' lives, and organizes outreach and evangelistic events. She longs for students to decide to follow Jesus as their Saviour and Lord. As the National Director of Youth Ministry for IVCF, Vanessa also develops and encourages IVCF high school staff across Canada.



Jorge and Gail Atiencia - Latin America Mission, Ecuador

Jorge and Gail serve with Latin America Mission. Their primary ministry continues to be the formation of Bible expositors on a variety of fronts. The “escuelitas” (mini preaching schools), where pastors as well as lay people receive training and mentoring over a three-year cycle, continue to thrive and multiply in Colombia, Ecuador, Peru, Bolivia, Argentina, Cuba and Central America, with initiatives bearing fruit in Brazil and Uruguay. Jorge’s commitment to biblical preaching includes extensive collaboration through his leadership on the Latin America Regional Team of Langham Preaching, which seeks to provide participants with tools, mentoring and fellowship to sharpen and deepen the impact of their preaching. At the annual Transformational Preaching Encounters in Medellin, Jorge models Bible exposition and leads plenary workshops, while Gail often translates for visiting English-speaking professors and coordinates small group practice. They are based in the city of Cuenca, Ecuador.



COMMENDED WORKERS *(not financially supported)*

Mick and Caroline Brown - WEC International, Ontario

Mick and Caroline continue to work as Canadian directors of WEC International, whose vision is to see Christ known, loved and worshipped by the unreached peoples of the world. Based at their headquarters in Ontario, their role includes mobilizing Canadians to join WEC as missionaries, training and supporting missionaries for international missions, and working with the WEC organization internationally.



Janet Haight - SIM Canada, Saskatchewan

Janet lives in Saskatoon where she is ministering to newcomers to Canada as a member of the SIM Canada field team. God has led Janet into building relationships with newcomers who need friendship and help with English as they transition to life in Canada. Janet maintains close contact with indigenous children's ministry colleagues in Burkina Faso (West Africa), where she served with SIM for 18 years, prior to returning to Canada to help care for aging family.



SHORT-TERM MISSION WORK

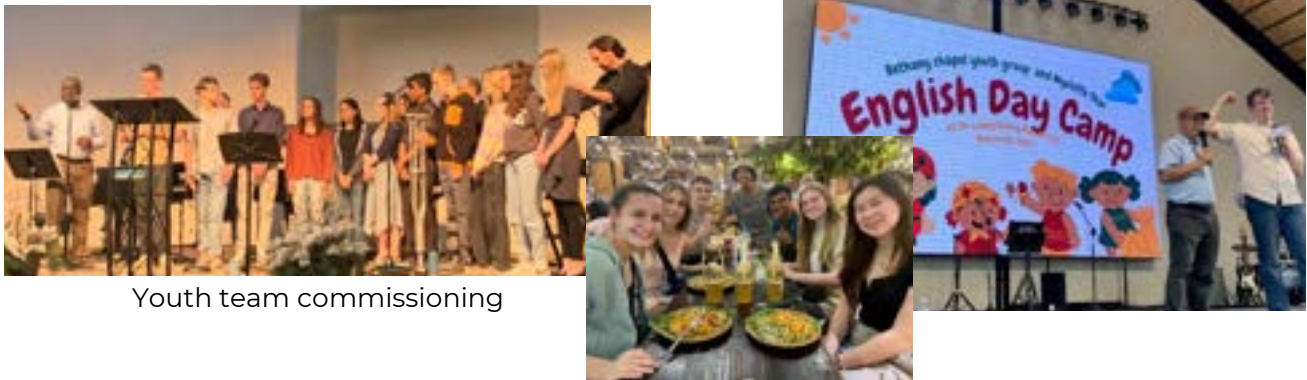
Thailand Youth Missions Trip

In 2024, a team of Bethany youth conducted a youth missions trip to Thailand. The trip involved observing Bible translation development and implementation, fellowship with the local Blessings Church (led by Pastor Wat Suebthayat, who is also the director for Wycliffe Thailand), immersion in the local culture, and service in a youth camp and an orphanage. Thank you to the many members of the congregation who supported the trip fund raising efforts through donations, bake sales, etc. Creating mission experiences for Bethany youth and young adults is a desire for the Missions Committee; the committee hopes to encourage future events at Bethany.

The youth missions team consisted of:

Youth members: Naomi Crockford, Seth Grasmeyer, Ella Malcolm, Max Malcolm, Grace Munnings, Anai Quintana Sanchez, Zoe Simpson, Jacob Somers, Tegan Wolingroski

Trip leaders: Will Moran, Rachael Stewart, Bobby Joseph



Youth team commissioning

Joni and Friends, Wheels for the World

Sheila Schuman went on two trips with Joni and Friends, providing general support and documenting stories for families who are receiving wheelchairs, on outreach trips in Mexico and Guatemala.



Peru Team

Fred Schuman, Nicolas Pantigoso and Doug Lewis have completed numerous trips to Peru to evangelize, lead Bible studies and provide materials for visually-impaired people in three main centres in Peru. The trio completed a 15-day mission in February 2024.

MISSIONS EVENTS

Missions Conference 2024: Hospitality (October 26)

The 2024 Missions Conference focused on hospitality and mission, with Bethany mission workers, Amy O. and Vanessa Kordupel, sharing their experiences from an international and Canadian perspective. The morning focus brought a refreshing perspective to hospitality and outreach, including a summary of how widely hospitality is represented throughout the Bible. An excellent breakfast was provided by Jay Somers and his cook team, with help from the Bethany Thailand youth team.

Many thanks to Jon ImBeau, President of Wycliffe Canada, who shared with Bethany on October 20 in the Sunday morning service, and to Amy O, Bethany Chapel missionary, who shared with Bethany on October 27.



KINGDOM FRIENDSHIPS

Kingdom Friendships is an elder-initiated partnership between Bethany Chapel and Wycliffe Thailand. This relationship has been ongoing since 2016, providing financial support from Bethany Chapel to Wycliffe Thailand and building relationships between Bethany and Wycliffe Thailand to focus on mission efforts in SE Asia. Bethany Chapel became involved with this initiative to 1) further God's kingdom; 2) focus missions efforts with a strategic alliance; 3) build missions awareness within Bethany; 4) learn from brothers and sisters in Christ from around the globe. It has been an encouragement to our friends in Thailand to have Bethany engaged with and praying for them. Many thanks to those at Bethany who continue to meet over Zoom to conduct English training sessions with folks in Thailand.

The financial contributions that Bethany has made to Wycliffe Thailand have in large part helped the foundation run its operations. This includes:

- Support of Bible translation projects (including in “closed” countries);
- Training of pastors from both Thailand and surrounding countries;
- Outreach efforts to the poor and needy throughout Thailand;
- Administrative support for mission agencies to work in Thailand.

Bethany's financial support for Wycliffe Thailand has varied between \$20,000 and \$54,000, with a goal to maintain ~\$54,000 in support. Wycliffe Thailand has engaged in fund-raising from local churches and businesses, however, the spiritual discipline of tithing and giving to missions is not strong in Thailand. Christianity is a very small percentage of the religious population. The lack of giving to missions is partially representative of the challenging spiritual conditions that exist in SE Asia.

KINGDOM FRIENDSHIPS

As previously mentioned, a youth missions team was sent to Thailand in 2024. To continue building on a friendship between Wycliffe Thailand and Bethany Chapel, there is a desire for future missions experiences by either sending Bethany members to Thailand, or helping to bring Thai friends to Calgary. The next youth missions trip will aim for 2026.

WYCLIFFE THAILAND HIGHLIGHTS

This year, Bethany’s support helped accomplish the following goals for the Wycliffe Thai Foundation:

Settled into the new office building. By God’s grace, and our support, the construction project was completed in just seven months, without causing any debt. Wycliffe Thai staff have moved in, and are using every square foot!



A worship event at new office building

Held a Kairos missions course in the Northeastern city of Udon Thani. The course’s focus was how mission work is a form of worship, because it brings people closer to God and gives Him glory. By the end of the course, everyone felt a strong call to reach out to the people in Thailand’s Isaan region.

Mobilized youth for missions. Regular gatherings, prayer meetings and camps for Thai youth are igniting awareness about the important of gospel outreach in this part of the world.

Launched a new Bible translation initiative. Payap University graduate Saro is preparing for her assignment in a neighbouring restricted-access country. She is studying the Che language and will serve on the Che Bible translation project. Wycliffe Thai Foundation is partnering with her in this work!



First-ever Thai Christian Youth for Missions Camp for over 60 youth!

Engaged local churches. Team members regularly met with pastors in Chiang Mai and other provinces of Thailand to talk about missions and mobilization.

Bolstered partnerships throughout Southeast Asia. Church congregations and Christian organizations from Singapore, Malaysia and a restricted-access nearby country are linking arms with Wycliffe Thai to serve the Bibleless in Southeast Asia.

Witnessed team members step into new roles in the Bible translation movement.

Wycliffe Thai staff Puangpaka recently joined a sign language Bible translation team. She has stepped out in faith, trusting that God will provide for her as she follows His leading.

Carried out language survey work. One team was sent to 20 provinces in the Isan region to better understand the language there. This work is laying the foundation for a future Bible translation project.

Hosted monthly prayer meetings. About 50 participants gather each month to pray about Wycliffe Thai Foundation’s outreaches throughout Southeast Asia.

Participated in missions conferences. The Foundation hosted a booth at the Arise Asia conference in Bangkok and also sent delegates to the “Missions in Action PLUS” missions mobilization event.

Continued to support Wycliffe Thai Foundation members and onboarded new workers. What a gift to see the team continuing to expand as people say ‘yes’ to following God’s call to ministry.



Wycliffe Thai team members at conference

COMMITTEE MEMBERS

The Missions Committee at Bethany Chapel is a small team of volunteer members of Bethany, many who have been serving on the committee for a significant number of years! In 2024, the committee was comprised of Kirstyn Mackie, Lyle Simpson, Chelsea Thiessen, Bruce Raddatz, Tom Ramsay and Jay Somers (elder liaison). Many thanks to Gerald Grasmeyer (deacon liaison), who was on the Missions Committee from Sept 2023 to March 2024, and to Brennan Dyck (pastoral liaison), who was on the Missions Committee from April 2023 to March 2024.

Note: deacons are no longer involved with the missions committee.

The Missions Committee encourages each member of the congregation to consider their individual role in mission work to which we all have been called, whether local or overseas. If you are considering missions in any capacity, please let the committee know and we will work together toward the great commission of Christ.

The Missions Committee is privileged to witness, and be involved in, the opportunities that God brings to Bethany Chapel, and to share this with the Bethany community. May we all continue to persevere in our faith in Jesus Christ and be a resilient community, bringing hope to our city and around the world as we consider missions and the calling of the Great Commission.



APPENDICES

Bethany Chapel



FAMILY LIFE

BIRTHS

Zoe Cossette - December 2
Beau Ronald Bryce Gillies - December 7

BAPTISMS

Addison Popowich - March 17
Michelle Brooks - June 16
Cali Champagne - June 16
Laurie Champagne - June 16
Naomi Grasmeyer - June 23
Olivia Chan - September 22
Tom Blanchette - October 13
Nancy Campbell - October 13

IN LOVING MEMORY

Jean Paul Dau - March 25
Peter Kushner - April 23
Greg Wigle - May 10
Stewart Fisher - May 30
John Braun - August 16
Bonita "Nita" Wight - August 21
Jean-Pierre Sebastien - September 13
Dorothy Nicholson - October 5
Frieda Duerksen - December 2
Tony Thoutenhoofd - December 15
Terry Kushner - December 22
Dr. John Chambers - 2024

CHILD DEDICATIONS

Winston Lappin - February 11
Ethan Moses - August 18
Hannah Rampton - September 22

NEW MEMBERS

Darren & Shawntel Brooks - March 3
Glen & Renee Bailey - July 14
Trevor Brum - August 4
Kelly Poirier - August 18
Peter and Irene Moses - August 18
Chris & Carmyn Prefontaine - August 18
Marie Pinkle - October 6
Curtis & Corrina Doell - October 27
Tom Blanchette & Nancy Campbell - November 3
Courtney Rampton - November 3

"Rejoice with those who rejoice, weep with those who weep."

- Romans 12:15

STAFF, DEACONS & ELDERS

As of December 31, 2024

PASTORAL STAFF

Dr. Paul Brushaber - Lead Pastor
Mary Dyck - Care & Community Director
Jen Brum - Women's & Seniors' Director
Will Moran - Youth & Young Adults' Pastor
Rachael Stewart - Children's Director
Kenzy Jali - Children's Assistant

OPERATIONAL STAFF

Glen Bailey - Operations Director
Shawntel Brooks - Administrative Assistant
Lisa Hicks - First Impressions Director
Joseph Jali - Lead Custodian
Kelly Poirier - Food Services Director
Peter Menzes - Audio Director
Marie Pinkle - Bookkeeper
Debra Unrau - Administrative Assistant

CUSTODIANS

Matthew Burgess
Mel Dow
Maria Hunter
Darrell Krien

ELDERS

Dr. Paul Brushaber
Stephen Chuang
Barry Lappin
Aaron Mackie, Chair
Jay Somers
Matthew Uponi

DEACONS

Darren Brooks
Robert Hohls, Treasurer
Andrew McCausland, Chair
Chris Prefontaine
Gaylene Sawatzkty



MINUTES

Bethany Chapel





Annual General Meeting

March 10, 2024, 1:00pm
Church Auditorium

Minutes

Minutes: Gaylene Sawatzky
AV & Recording: Dave D'Amico
Sound: Peter Menzes

Welcome: MC, Pat Taylor

- 25% of 221 members required to reach quorum (need 56 members)
- Quorum has been achieved with 120 members present
- Meeting is being recorded.

Call to Order: MC

- The 74th Annual General Meeting of Bethany Chapel of Calgary was called to order.

Opening Prayer: Rachael Stewart, Children's Ministry Coordinator

Agenda Review: MC

- AGM Agenda Reviewed
- Motion [1] to adopt the Agenda as presented
 - Moved by: Mel Dow Seconded by: Cam McCartney
 - Questions: None
 - In Favour: All Opposed: Nil Abstained: Nil
 - Motion Carried

Motions Regarding Minutes: MC

- Motion [2] to dispense with reading the AGM Minutes of May, 2023 as printed and posted
 - Moved by: Cam McCartney Seconded by: Lisa Hicks
 - Questions: None
 - In Favour: All Opposed: Nil Abstained: Nil
 - Motion Carried

- Motion [3] to accept the AGM Minutes of May, 2023 as printed and posted
 - Moved by: Mel Dow Seconded by: Cam McCartney
 - Questions: None
 - In Favour: All Opposed: Nil Abstained: Nil
 - Motion Carried

Financial Reports: Summary by Robert Hohls, Treasurer

- Presentation of 2023 Financial Statements
 - Notable 2023 financial items included: budgeted a balance budget but ended the year with a healthy surplus from lower expenses and higher other income. Capital was focused on basement renovations and IT upgrades, and in addition we successfully implemented QuickBooks as our new accounting system.
 - Questions: None

- Motion [4] to accept Audited 2023 Financial Statements
 - Moved by: Cam McCartney Seconded by: Howard Van Camp
 - In Favour: All Opposed: Nil Abstained: Nil
 - Motion Carried

- Presentation of proposed 2024 Budget
 - Projected 15% increase in contributions
 - Questions: None
- Motion [5] to accept 2024 Budget as presented
 - Moved by: Aaron Cossette Seconded by: Jim Robert
 - In Favour: All Opposed: Nil Abstained: Nil
 - Motion Carried
- Motion [6] to accept *Dart Bryant Chartered Accountants* as auditors for fiscal year 2024
 - Moved by: Mel Dow Seconded by: Cam McCartney
 - Questions: None
 - In Favour: All Opposed: Nil Abstained: Nil
 - Motion Carried

Election of Deacons:

Andrew McCausland, Deacon Chair

- Expressed appreciation to Gerald Grasmeyer for 6 years of service as a Deacon
- Introduced new Deacon nominee, Darren Brooks
- Motion [7] to elect Darren Brooks as a new Deacon
 - Moved by: Gaylene Sawatzky Seconded by: Kirsten Mackie
 - Questions: None
 - In Favour: All Opposed: Nil Abstained: Nil
 - Motion Carried

MC - introduced Andrew McCausland

- Motion [8] to re-elect Andrew McCausland as a Deacon
 - Moved by: Cam McCartney Seconded by: Mark Sawatzky
 - Questions: None
 - In Favour: All Opposed: Nil Abstained: Nil
 - Motion Carried

MC: Expressed thanks to the Elders, Deacons, and Pastors. Suggested congregants send occasional notes of appreciation.

Elder Report: Aaron Mackie

- We see God's hand in Bethany's growth, at a time when other churches are struggling.
- Attendance is up 35%, comprised of people who are: new to the city, believers seeking sound Biblical teaching, and new seekers.
- New attendees, particularly youth, are connecting quickly by engaging and volunteering in church ministries.
- Jay Somers joined the Elders, and Mary Dyck took on more of the care work.
- Bethany's growth is not only in numbers, but also in our relationships & ministries.
- We see strong relationships and good communication between Elders and Deacons, with combined quarterly meetings and shared meals.
- Strategic Plan Challenge: be faithful in prayer. Select 5 people to pray for, including some who do not yet know Jesus, and invite at least 1 to Bethany (Sunday service or other activity).
- If you are not yet plugged in, find out where you can both develop and serve.

Deacon Report: Andrew McCausland

- We have much to celebrate: increased funding to missions (15% of all contributions), growth in Sunday morning attendance (from 300 last year to 400+ currently), new staff hires, increased staff salary & compensation benefits.

- Goal is to increase capital reserve to 15% to support upcoming renovation projects (ie: the gym, as well as a multi-year plan to encompass the Elder's vision for the building).
- Policy development and refinement is underway to reduce volume and improve clarity. Deacons are working closely with the Elders on this. In response to a submitted question, no policy specifically addresses renovations, but some apply.

Lead Pastor Report: Dr. Paul Brushaber

- Main Roles: teaching, and strategic planning with the Elders.
- Burden is to create a healthy church culture that offers spiritual nourishment and is welcoming to people from all stages; to be a place where mature believers stay, young believers grow, non-believers come; to be multi-generational, physically and spiritually.
- This requires that we lead with a style toward the younger generations.
- It is encouraging to see that Bethany is reaching and welcoming young families and the younger demographic. We are seeing significant growth in attendance and ministry involvement. Our church is getting younger.
- In response to a submitted question about promoting membership & baptism for newcomers: we are currently updating our membership materials and they will be available soon. We will be having baptisms next week.
- Thanks to DeDe for her sacrifice and support.
- Thanks to the staff: to Louise for all her work (as she is retiring in July), and to the new staff that have recently come on board.
- Thanks to the Elders for their strong support, and for their commitment to good communication, connecting, and working behind the scenes to serve Bethany.

Questions and Answers:

- Questions Submitted:
 - Addressed by Andrew:
 - Q1. Why did the pre-school close?
A. Low enrolment.
 - Q2. Why use the Care Fund to pay the Director of Care & Community salary?
A. It has always been that way, we saw no reason to change it.
 - Q3. What if the Care Fund runs out?
A. We can top it up as required from the General Fund. Deacons will bring this to the attention of the congregation, if it happens.
 - Q4. What is the vision for renovations, and will there be congregation input?
A. The Elders are developing a multi-year plan to make the building more useful for current needs, and have hired a design consultant to assist with this. We received positive feedback on last year's projects, and are currently looking to renovate the gym and other areas.
 - Q5. Do we have a renovations policy?
A. No, but we have policies that are relevant to renovations.
 - Q6. Who will be project manager for renovations?
A. Whenever possible, a staff member with the necessary skills.
 - Q7. Are exit interviews for staff being conducted?
A. Yes
 - Q8. What is the authorized number of Deacons?
A. The number set by the Elders is five. We are looking to fill this need.

- Addressed by Aaron:
 - Q9. Do the Elders plan to hold town hall meetings?
 - A. No. If you have questions, please contact the Elders directly.

- Addressed by Paul:
 - Q10. What is happening with the rebrand?
 - A. We are in the process of our rebrand, which will be rolling out soon, with the primary focus being website development, colour and font consistency on signs, etc. There will be a small change to our logo, but there is no plan to change the church name.

 - Q11. What is the Pastor availability at the office?
 - A. For members, please make appointments wherever possible. Staff roles and requirements vary, so availability 9-5 every day is not a critical standard. We do limit accessibility for strangers, due to safety concerns.

- Questions from the Floor:
 - Q12. What is the difference between Elders and Deacons?
 - A. [Aaron Mackie and Andrew McCausland] Elders give spiritual direction and vision. Deacons, under the authority and direction of the Elders, are more hands on with managing the finances and facility, to keep the church running smoothly.

 - Q13. What is the plan for gym renovations?
 - A. Updating - mainly cosmetic.

Closing Prayer: Darren Brooks

Motion [9] to Adjourn the AGM: MC

- Moved by: Aaron Dyck Seconded by: Mel Dow
- Questions: None
- In Favour: All Opposed: Nil Abstained: Nil
- Motion Carried

MC thanked everyone involved with putting on the lunch and meeting.

Meeting adjourned at 2:15PM



Annual General Meeting

**March 10, 2024
Church Auditorium**

Summary of Resolutions

Passed:

- Motion #1: To adopt the Agenda for this AGM as presented.
- Motion #2: To dispense with reading the AGM Minutes of May, 2023 as printed and posted.
- Motion #3: To accept the AGM Minutes of May, 2023 as printed and posted.
- Motion #4: To accept the Audited 2023 Financial Statements.
- Motion #5: To accept the 2024 Budget as presented.
- Motion #6: To accept *Dart Bryant Chartered Accountants* as auditors for fiscal year 2024.
- Motion #7: To elect Darren Brooks as a Deacon.
- Motion #8: To re-elect Andrew McCausland as a Deacon.
- Motion #9: To Adjourn the AGM.

Rejected:

None



FINANCIALS

Bethany Chapel



TREASURER REPORT

Robert Hohls



Attached to this report you will find the Financial Statements of Bethany Chapel of Calgary (“Bethany”) for the year ended December 31, 2024, together with the proposed Budget for 2025.

In 2024, the General Fund excess of total revenues over total expenses, was approximately \$341,000 compared to a budgeted surplus of \$20,287. Praise God for his never-ending faithfulness and the congregation’s continued faithful giving.

The combined General Fund contributions and other revenue exceeded what we had planned, while the operating expenses were down mainly due to lower spending on staffing, Missions Support and Utilities; partially offset by higher ministries and building repairs & maintenance.

Our General Fund is the primary pool of funds that are used to carry on the church ministries, support missions, and perform the administrative activities of Bethany; it is in this Fund where most congregational giving is directed. When we prepare our Annual Budget for the General Fund, we generally plan for a “balanced or surplus budget” – that is, total expenses are budgeted to match, or are lower than, our budgeted total net revenues (net contributions plus other sources of revenue).

In 2025, we are planning a surplus budget, which includes an increase in contributions over 2024. We believe that the increase is a balance of being conservative and being faithful when budgeting for 2025 contributions. The church is currently in a strong financial position due to the continued fiscal stewardship of Bethany by its staff and volunteers and we are seeing continued growth in the size of the congregation.

The leadership believes that this is a prudent planning assumption considering the continued growth, while supporting the church’s ministries.

Our Care Fund provides benevolent support to those in need within the church body and in the community through various forms of financial assistance, together with the pastoral care component. Many within Bethany support this fund through regular contributions and we are thankful for your ongoing commitment to help those in need. We ask for your continued contributions to this fund to carry on this ministry as we have in the past.



TREASURER REPORT

The New Initiatives Fund represents the accumulation of surplus funds, including contributions from estates, set aside for special projects and opportunities as may be directed by the Elders.

The Special Missions Fund holds and disburses funds raised for Bethany's short-term mission experiences and projects. Each year, in order to create long-term predictability and stability for missions funding, Missions will receive 15% of the offering target. The Special Missions Fund will be viewed as a "Reserve Missions Fund," allowing the Missions Committee some flexibility when unplanned opportunities arise.

The Capital Reserve Fund accumulates through a regular allocation of eight percent from General Fund contributions, as well as from specific contributions towards capital projects. Bethany incurred expenditures relating mainly to renovating the gymnasium, as well as other building-related maintenance. Additionally, investments were made upgrading sound and computer equipment. In 2025, the planned capital budget will continue to focus mainly on improving and maintaining our building, sound and computer equipment.

On behalf of the Deacons, I would like to thank the staff and volunteers who administer Bethany's financial operations, and those of you who so faithfully provide financial support for Bethany.

As always, please feel free to contact me with any questions or comments that you might have relating to the financial statements, the budget, or any financial matter relating to Bethany.

BETHANY CHAPEL OF CALGARY
Financial Statements
Year Ended December 31, 2024

BETHANY CHAPEL OF CALGARY
Index to Financial Statements
Year Ended December 31, 2024

	Page
INDEPENDENT AUDITOR'S REPORT	1 - 2
FINANCIAL STATEMENTS	
Statement of Financial Position	3 - 4
Statement of Operations and Changes in Fund Balances	5
Statement of Cash Flows	6
Notes to Financial Statements	7 - 11
Schedule of Other Revenue (<i>Schedule 1</i>)	12
Schedule of Missionary Support (<i>Schedule 2</i>)	12
Schedule of Operating Expenses (<i>Schedule 3</i>)	13



Dart Bryant LLP
Chartered Professional Accountants
250, 1319 Edmonton Trail NE
Calgary, Alberta - T2E 4Y8
www.dartbryant.com
P. 403-230-3764
F. 403-230-3766

INDEPENDENT AUDITOR'S REPORT

To the Members of Bethany Chapel of Calgary

Qualified Opinion

We have audited the financial statements of Bethany Chapel of Calgary (the Church), which comprise the statement of financial position as at December 31, 2024, and the statements of operations and changes in fund balances and cash flows for the year then ended, and notes to the financial statements, including a summary of significant accounting policies.

In our opinion, except for the possible effects of the matter described in the *Basis for Qualified Opinion* section of our report, the accompanying financial statements present fairly, in all material respects, the financial position of the Church as at December 31, 2024, and the results of its operations and cash flows for the year then ended in accordance with Canadian accounting standards for not-for-profit organizations (ASNPO)

Basis for Qualified Opinion

In common with many charitable organizations, the Church derives revenue from donation contributions the completeness of which is not susceptible of satisfactory audit verification. Accordingly, our verification of these revenues was limited to the amounts recorded in the records of the Church. Therefore, we were not able to determine whether any adjustments might be necessary to contributions, excess of operations, and cash flows from operations for the year ended December 31, 2024, current assets and fund balances as at December 31, 2024, and fund balances, as at January 1 and December 31 for both 2024 and 2023. Our audit opinion on the financial statements for the year ended December 31, 2023 was modified accordingly because of the possible effects of this limitation of scope. Consequently, we were unable to determine whether any adjustments to these amounts were necessary.

We conducted our audit in accordance with Canadian generally accepted auditing standards. Our responsibilities under those standards are further described in the *Auditor's Responsibilities for the Audit of the Financial Statements* section of our report. We are independent of the Church in accordance with ethical requirements that are relevant to our audit of the financial statements in Canada, and we have fulfilled our other ethical responsibilities in accordance with these requirements. We believe that the audit evidence we have obtained is sufficient and appropriate to provide a basis for our qualified audit opinion.

Responsibilities of Management and Those Charged with Governance for the Financial Statements

Management is responsible for the preparation and fair presentation of the financial statements in accordance with ASNPO, and for such internal control as management determines is necessary to enable the preparation of financial statements that are free from material misstatement, whether due to fraud or error.

In preparing the financial statements, management is responsible for assessing the Church's ability to continue as a going concern, disclosing, as applicable, matters related to going concern and using the going concern basis of accounting unless management either intends to liquidate the Church or to cease operations, or has no realistic alternative but to do so.

Those charged with governance are responsible for overseeing the Church's financial reporting process.

(continues)

Independent Auditor's Report to the Members of Bethany Chapel of Calgary (*continued*)

Auditor's Responsibilities for the Audit of the Financial Statements

Our objectives are to obtain reasonable assurance about whether the financial statements as a whole are free from material misstatement, whether due to fraud or error, and to issue an auditor's report that includes our opinion. Reasonable assurance is a high level of assurance, but is not a guarantee that an audit conducted in accordance with Canadian generally accepted auditing standards will always detect a material misstatement when it exists. Misstatements can arise from fraud or error and are considered material if, individually or in the aggregate, they could reasonably be expected to influence the economic decisions of users taken on the basis of these financial statements.

As part of an audit in accordance with Canadian generally accepted auditing standards, we exercise professional judgment and maintain professional skepticism throughout the audit. We also:

- Identify and assess the risks of material misstatement of the financial statements, whether due to fraud or error, design and perform audit procedures responsive to those risks, and obtain audit evidence that is sufficient and appropriate to provide a basis for our opinion. The risk of not detecting a material misstatement resulting from fraud is higher than for one resulting from error, as fraud may involve collusion, forgery, intentional omissions, misrepresentations, or the override of internal control.
- Obtain an understanding of internal control relevant to the audit in order to design audit procedures that are appropriate in the circumstances, but not for the purpose of expressing an opinion on the effectiveness of the Church's internal control.
- Evaluate the appropriateness of accounting policies used and the reasonableness of accounting estimates and related disclosures made by management.
- Conclude on the appropriateness of management's use of the going concern basis of accounting and, based on the audit evidence obtained, whether a material uncertainty exists related to events or conditions that may cast significant doubt on the Church's ability to continue as a going concern. If we conclude that a material uncertainty exists, we are required to draw attention in our auditor's report to the related disclosures in the financial statements or, if such disclosures are inadequate, to modify our opinion. Our conclusions are based on the audit evidence obtained up to the date of our auditor's report. However, future events or conditions may cause the Church to cease to continue as a going concern.
- Evaluate the overall presentation, structure and content of the financial statements, including the disclosures, and whether the financial statements represent the underlying transactions and events in a manner that achieves fair presentation.

We communicate with those charged with governance regarding, among other matters, the planned scope and timing of the audit and significant audit findings, including any significant deficiencies in internal control that we identify during our audit.

February 14, 2025



Chartered Professional Accountants

BETHANY CHAPEL OF CALGARY

Statement of Financial Position

December 31, 2024

	General Fund	Care Fund	Special Missions Fund	Capital Reserve Fund	Invested in Property and Equipment	New Initiatives Fund	2024	2023
ASSETS								
CURRENT								
Cash and cash equivalents (Note 4)	\$ 1,451,571	\$ 42,633	\$ 35,406	\$ 98,090	\$ -	\$ 94,965	\$ 1,722,665	\$ 1,283,309
Accounts receivable	60,122	305	-	-	-	-	60,427	11,563
Interest receivable	22,259	-	-	-	-	-	22,259	22,246
Goods and services tax recoverable	4,264	107	-	-	-	-	4,371	5,945
Prepaid expenses	22,778	375	-	-	-	-	23,153	11,515
	1,560,994	43,420	35,406	98,090	-	94,965	1,832,875	1,334,678
CAPITAL ASSETS (Note 5)								
	-	-	-	-	2,429,583	-	2,429,583	2,437,540
	\$ 1,560,994	\$ 43,420	\$ 35,406	\$ 98,090	\$ 2,429,583	\$ 94,965	\$ 4,262,458	\$ 3,772,118

The accompanying notes are an integral part of the financial statements

BETHANY CHAPEL OF CALGARY

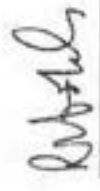
Statement of Financial Position

December 31, 2024

	General Fund	Care Fund	Special Missions Fund	Capital Reserve Fund	Invested in Property and Equipment	New Initiatives Fund	2024	2023
LIABILITIES AND FUND BALANCES								
CURRENT								
Accounts payable and accrued liabilities	\$ 73,242	\$ 3,349	\$ -	\$ -	\$ -	\$ -	\$ 76,591	\$ 49,349
Unearned Revenue	126,584	370	-	-	-	-	126,954	110,306
	199,826	3,719	-	-	-	-	203,545	159,655
FUND BALANCES								
Unrestricted	1,361,168	-	-	-	-	-	1,361,168	1,021,987
Internally restricted	-	-	-	98,090	2,429,583	94,965	2,622,638	2,517,034
Externally restricted	-	39,701	35,406	-	-	-	75,107	73,442
	1,361,168	39,701	35,406	98,090	2,429,583	94,965	4,058,913	3,612,463
	\$ 1,560,994	\$ 43,420	\$ 35,406	\$ 98,090	\$ 2,429,583	\$ 94,965	\$ 4,262,458	\$ 3,772,118

ON BEHALF OF THE BOARD


Director


Director

The accompanying notes are an integral part of the financial statements

BETHANY CHAPEL OF CALGARY
Statement of Operations and Changes in Fund Balances
Year Ended December 31, 2024

	General Fund	Care Fund	Special Missions Fund	Capital Reserve Fund	Invested in Property and Equipment	New Initiatives Fund	2024	2023
REVENUES								
Contributions	\$ 1,287,774	\$ 106,299	\$ 7,596	\$ -	\$ -	\$ 94,965	\$ 1,496,634	\$ 1,150,111
Other Revenue (Schedule 1)	571,084	-	-	-	-	-	571,084	450,082
Grants & subsidies	797	-	-	-	-	-	797	26,224
	1,859,655	106,299	7,596	-	-	94,965	2,068,515	1,626,417
EXPENSES								
Schedule of Operating Expenses (Schedule 3)	1,230,964	-	-	4,791	-	-	1,235,756	1,162,215
Missionaries working with international organizations (Schedule 2)	178,585	-	-	-	-	-	178,585	140,322
Amortization of tangible assets	3,859	109,955	-	-	88,790	-	88,790	91,233
Pastoral care	-	-	4,574	-	-	-	113,814	53,104
Missions Trips	-	-	-	547	-	-	4,574	18,904
Building Renovations	-	-	-	-	-	-	547	1
	1,413,408	109,955	4,574	5,338	88,790	-	1,622,066	1,465,779
EXCESS (DEFICIENCY) OF OPERATIONS	446,247	(3,656)	3,022	(5,338)	(88,790)	94,965	446,449	160,638
TRANSFERS								
Allocation to other reserve funds (Note 7)	(107,066)	-	2,299	104,767	-	-	-	-
Capital expenditures	-	-	-	(80,833)	80,833	-	-	-
	(107,066)	-	2,299	23,934	80,833	-	-	-
NET EXCESS (DEFICIENCY) OF OPERATIONS AFTER TRANSFERS	339,181	(3,656)	5,321	18,596	(7,957)	94,965	446,449	160,638
FUND BALANCES - BEGINNING OF YEAR	1,021,987	43,357	30,085	79,494	2,437,540	-	3,612,463	3,451,824
FUND BALANCES - END OF YEAR	\$ 1,361,168	\$ 39,701	\$ 35,406	\$ 98,090	\$ 2,429,583	\$ 94,965	\$ 4,058,913	\$ 3,612,462

The accompanying notes are an integral part of the financial statements

BETHANY CHAPEL OF CALGARY
Statement of Cash Flows
Year Ended December 31, 2024

	2024	2023
OPERATING ACTIVITIES		
Excess of operations	\$ 446,449	\$ 160,638
Item not affecting cash:		
Amortization of capital assets	88,790	91,233
	<u>535,239</u>	<u>251,871</u>
Changes in non-cash working capital:		
Accounts receivable	(48,864)	3,680
Interest receivable	(14)	(17,414)
Accounts payable and accrued liabilities	27,243	(6,182)
Prepaid expenses	(11,638)	350
Goods and services tax payable	1,574	2,094
Other current liabilities	16,648	(8,910)
	<u>(15,051)</u>	<u>(26,382)</u>
Cash flow from operating activities	<u>520,188</u>	<u>225,489</u>
INVESTING ACTIVITY		
Purchase of capital assets	(80,833)	(152,572)
Cash flow used by investing activity	<u>(80,833)</u>	<u>(152,572)</u>
INCREASE IN CASH FLOW	439,355	72,917
Cash and cash equivalents - beginning of year	<u>1,283,310</u>	<u>1,210,391</u>
CASH AND CASH EQUIVALENTS - END OF YEAR (Note 4)	<u>\$ 1,722,665</u>	<u>\$ 1,283,308</u>

BETHANY CHAPEL OF CALGARY
Notes to Financial Statements
Year Ended December 31, 2024

1. VISION OF THE CHAPEL

Bethany Chapel of Calgary ("the Church") is an independent local church whose vision is to "Open Doors to God's Truth and Love". In order to accomplish this goal the Church offers various church services and programs for children, young people, adults, and senior citizens and provides support to a number of missionaries and missions programs. In an effort to meet the needs of its immediate community, the Church operates a preschool program for three and four year old children, and offers Parish Nursing services to those requiring assistance.

The Church was incorporated in 1951 under the Religious Societies' Land Act of the province of Alberta. The Church is registered under the Income Tax Act as a charitable organization and accordingly is authorized to issue donation receipts.

The ongoing operations of the Church are dependent upon the continued donation support of those interested.

2. ACCOUNTING POLICIES

Financial statements are prepared on the assumption that the entity is a going concern, meaning it will continue in operation for the foreseeable future and will be able to realize its assets and discharge its liabilities in the normal course of operations. Management is required to assess whether there are any events or conditions that may cast significant doubt upon the entity's ability to continue as a going concern. Management is not aware of any such material uncertainties; accordingly these financial statements have been prepared using the going concern assumption.

The financial statements were prepared in accordance with Canadian accounting standards for not-for-profit organizations and, in management's opinion, with consideration of materiality and within the framework of the following accounting policies:

Fund accounting

The Church uses the following funds for recording its operations:

The **General Fund** is the primary pool of funds that are used to carry on the church ministries, support missions and perform the administrative activities of Bethany Chapel. This fund is supported by unrestricted contributions from the congregation, revenue from parking and facility rentals and other unrestricted revenue, out of which the majority of missions support and expenses occur.

The **Care Fund** provides benevolent support to those in need within the church body and the community, through various forms of assistance together with Parish Nursing services. Many within Bethany support this fund through regular contributions to this fund.

The **Special Missions Fund** receives and disburses funds raised for Bethany Chapel's short-term mission experiences and other designated missions expenses approved by the Missions Committee. Restricted contributions for this purpose are reported in this fund. The administration of the distribution of the funds is the responsibility of the Missions Committee.

Each contribution designated towards such an approved trip will be used as designated with the understanding that when the need for short term mission programs funding has been met, or the program cannot be completed for any reason, as determined by the Missions Committee and the Deacons, the remaining funds will be used where needed the most. Generally, the excess funds will remain in the Special Missions Fund for funding future programs; however the Missions Committee and the Deacons have the discretion to distribute funds from the Special Missions Fund to the General Fund should the need arise.

(continues)

BETHANY CHAPEL OF CALGARY
Notes to Financial Statements
Year Ended December 31, 2024

2. ACCOUNTING POLICIES *(continued)*

The **New Initiatives Fund** represents the accumulation of surplus funds, including contributions from estates, which have been set aside for special projects and opportunities as may be directed by the Elders after consultation with the Deacons. Restricted contributions for this purpose are reported in this fund. Interest income earned on investments in the fund is used for General Fund purposes.

The **Capital Reserve Fund** accumulates through a regular allocation of 8% from the General Fund contributions, as well as from specific contributions towards capital projects such as the Thanksgiving Offering and other designated contributions. The fund is intended to be used for renovations, repairs, and equipment replacement. Unused funds may be released from this internal restriction by a decision of the Deacons.

Financial instruments

Financial instruments are recorded at fair value when acquired or issued. In subsequent periods, financial assets with actively traded markets are reported at fair value, with any unrealized gains and losses reported in income. All other financial instruments are reported at amortized cost, and tested for impairment at each reporting date. Transaction costs on the acquisition, sale, or issue of financial instruments are expensed when incurred.

The organization's financial instruments consist of cash and cash equivalents, accounts receivable, interest receivable and accounts payable and accrued liabilities.

Cash and cash equivalents

Cash and cash equivalents are recorded at cost and include cash in the bank and short-term investments convertible to cash with original maturities of less than 3 months or cashable at any time. Due to the short term maturities of the investments, cost is considered to be equivalent to fair value.

Capital assets

Capital assets are stated at cost or deemed cost less accumulated amortization. Contributed capital assets are recorded at fair value at the date of contribution. Where the asset donated is not subject to amortization, the value of the donation is added directly to the Investment in Capital Assets, and is not included in the statement of operations. Capital assets are amortized over their estimated useful lives on a declining balance basis at the following rates and methods:

Buildings	4%
Furnishings, computers and equipment	20%
Sound equipment	10%

The Church regularly reviews its capital assets to eliminate obsolete items.

Capital assets acquired during the year but not placed into use are not amortized until they are placed into use.

(continues)

BETHANY CHAPEL OF CALGARY
Notes to Financial Statements
Year Ended December 31, 2024

2. ACCOUNTING POLICIES (*continued*)

Impairment of long lived assets

The Church tests for impairment whenever events or changes in circumstances indicate that the carrying amount of the assets may not be recoverable. Recoverability is assessed by comparing the carrying amount to the projected future net cash flows the long-lived assets are expected to generate through their direct use and eventual disposition. When a test for impairment indicates that the carrying amount of an asset is not recoverable, an impairment loss is recognized to the extent the carrying value exceeds its fair value.

Revenue recognition

The Church follows the restricted fund method of accounting for contributions under which contributions received which have been restricted to be used for specific approved purposes are accounted for in the fund corresponding to the purpose.

Restricted contributions for which no corresponding restricted fund is presented must be recognized in the General Fund using the deferral method.

Unrestricted contributions are recognized as revenue in the General Fund.

Grants and subsidies are recognized as revenue when received or receivable.

Rental revenue, parking pass income and other revenues are recognized as revenue in the period in which it is earned.

Investment income is recorded as earned and includes fair value adjustments to financial assets.

Non-cash contributions, such as shares and materials are recorded at their estimated fair value which is the same as the amount for which a donation receipt has been issued.

Use of estimates

The preparation of financial statements in accordance with Canadian generally accepted accounting principles requires management to make estimates and assumptions that affect the reported amount of assets and liabilities, and disclosure of contingent assets and liabilities, at the date of the financial statements, and the reported amount of revenues and expenses during the reporting period. These estimates are reviewed periodically, and, as adjustments become necessary, they are reported in earnings in the period in which they became known.

Significant estimates included in these financial statements include the useful life of and impairment of property and equipment and accrued liabilities.

Contributed services

During the year volunteers are required to assist the Church in conducting its programs. Because of the difficulty of determining the number of hours provided and their fair value, the value of donated services is not recognized in the financial statements.

Allocation of expenses

The Church presents its expenses on a functional basis including Ministries, Facilities and Administration. Costs directly related to those functions are allocated to the specific function. Costs not directly related to Ministries or Facilities are included in Administration.

BETHANY CHAPEL OF CALGARY
Notes to Financial Statements
Year Ended December 31, 2024

3. FINANCIAL INSTRUMENTS

The Church has the following financial instruments reported in its balance sheet: cash and cash equivalents (including GIC investments), accounts and interest receivable, and accounts payable. All financial instruments are recorded at amortized cost due to the short time over which they will be converted to cash.

Unless otherwise noted, it is management's opinion that the Church is not exposed to significant interest, currency or credit risks arising from these financial instruments.

4. CASH AND CASH EQUIVALENTS

	2024	2023
Cash in bank	\$ 422,665	\$ 1,283,309
GIC investments (cashable)	1,300,000	800,000
	\$ 1,722,665	\$ 2,083,309

The Church's cash consists of cash held in a chequing account and cash invested in Cashable Guaranteed Investment Certificate which have a maturity date of one year or less. The annualized rates of interest of the GIC range from 3.70% to 4.95% (2023: 4.25% to 4.55%). Early withdrawal of amounts from certain of the GIC's result in the loss of a portion of accumulated interest income.

The Church is subject to interest rate risk on the interest earning portion of its cash and cash equivalents to the extent that interest rates fluctuate while holding the investments, but is not considered significant.

5. CAPITAL ASSETS

	Cost	Accumulated amortization	2024 Net book value	2023 Net book value
Land	\$ 1,012,233	\$ -	\$ 1,012,233	\$ 1,012,233
Buildings	3,135,850	1,836,515	1,299,335	1,296,633
Furnishings, computers and equipment	1,133,273	1,093,757	39,516	49,395
Sound equipment	198,762	120,263	78,499	79,279
	\$ 5,480,118	\$ 3,050,535	\$ 2,429,583	\$ 2,437,540

6. EMPLOYEE PENSION PLAN

The Church established a group registered retirement savings plan for its salaried employees. The plan is a defined contribution plan and consequently there is no unfunded pension liability outstanding.

The Church's contribution to the pension plan totalled \$26,634 (2023: \$28,319) and is included in aggregate salaries and benefits for Ministries, Facilities and Administration of \$850,846 (2023: \$807,460).

BETHANY CHAPEL OF CALGARY
Notes to Financial Statements
Year Ended December 31, 2024

7. CAPITAL RESERVE FUND

The Capital Reserve Fund is an internally restricted fund administered at the discretion of the Deacons, to provide for renovations, repairs and equipment replacement as needed by the Church. The Fund is supported by the following:

An internal allocation of 8% (amounting to \$103,022 (2023: \$85,226) of annual contributions received in the General Fund for operations. This was recorded as an inter-fund transfer from the General Fund for building renovations and maintenance.

BETHANY CHAPEL OF CALGARY
Schedule of Other Revenue
Year Ended December 31, 2024

(Schedule 1)

	2024	2023
Other Revenue		
Facility rentals	\$ 284,314	\$ 148,630
Interest	39,208	34,222
Parking pass income	205,557	218,519
Programs and events	36,043	26,550
Preschool	-	(1,019)
CEBA Loan forgiveness	-	20,000
Youth	5,962	3,180
	<u>\$ 571,084</u>	<u>\$ 450,082</u>

Schedule of Missionary Support
Year Ended December 31, 2024

(Schedule 2)

	2024	2023
Missionary Support		
Missionaries working with international organizations	\$ 114,250	\$ 104,849
Local missions	63,969	34,304
Projects and missions conference	366	1,169
	<u>\$ 178,585</u>	<u>\$ 140,322</u>

BETHANY CHAPEL OF CALGARY
Schedule of Operating Expenses
Year Ended December 31, 2024

(Schedule 3)

	2024	2023
Ministries		
Salaries & benefits	\$ 343,204	\$ 391,193
Christian education	30,647	26,752
Evangelism	33,007	29,427
Youth	37,249	16,620
Worship	21,357	12,792
Ministries total	465,464	476,784
Preschool		
Salaries & benefits	-	21,656
Program	-	760
Preschool total	-	22,416
Facilities		
Salaries & benefits	130,469	112,367
Building repairs and maintenance	41,686	37,899
Insurance	25,366	25,724
Utilities	60,971	59,932
Facilities total	258,492	235,922
Administration		
Salaries & benefits	377,173	303,900
Finance & banking	30,903	24,771
Office & other	103,724	98,422
Administration total	511,800	427,093
Grand Total	\$ 1,235,756	\$ 1,162,215



2025 PROPOSED BUDGET

Bethany Chapel



Bethany Chapel of Calgary

Final - AGM

Actuals & Proposed Budget - Statement of Operations and Changes in Fund Balances

Year Ended December 31, 2024

2025 Budget – Funds

	General Fund	Care Fund	New Initiatives Fund	Special Missions Fund	Capital Reserve Fund	Property and Equipment	Total
Fund balances, beginning of year	1,361,167	39,701	94,965	35,406	98,091	2,429,584	4,058,913
Revenues							
Contributions	1,300,000	85,836	-	-	-	-	1,385,836
Other	506,672	-	-	-	-	-	506,672
Total Revenues	1,806,672	85,836	-	-	-	-	1,892,508
Expenses							
Staffing	1,048,339						1,048,339
Building, Maintenance and Insurance	147,250						147,250
Office & Other	144,900						144,900
Ministries	136,952						136,952
Missions	195,000			-			195,000
Care		113,408					113,408
New Initiatives			-				-
Capital – Operating Expense					7,200		7,200
Depreciation						88,800	88,800
Total Expenses	1,672,441	113,408	-	-	7,200	88,800	1,881,849
Change in fund balances during the year	134,231	(27,572)	-	-	(7,200)	(88,800)	10,659
Capital Fund Allocation	(104,000)				104,000		-
Transfer to Capital Fund							-
Transfer to Special Missions Fund	(9,416)			9,416			-
Transfer to Other Funds							-
Capital - Property and Equipment					(143,400)	143,400	-
Fund balances, end of year	1,381,981	12,129	94,965	44,823	51,491	2,484,184	4,069,572

2024 Actual – Funds

	General Fund	Care Fund	New Initiatives Fund	Special Missions Fund	Capital Reserve Fund	Property and Equipment	Total
Fund balances, beginning of year	1,021,987	43,357	-	30,085	79,494	2,437,540	3,612,463
Revenues							
Contributions	1,287,776	106,299	94,965	7,596	-	-	1,496,636
Other	561,750				-	-	561,750
Total Revenues	1,849,526	106,299	94,965	7,596	-	-	2,058,386
Expenses							
Staffing	853,954						853,954
Building, Maintenance and Insurance	127,933						127,933
Office & Other	130,675						130,675
Ministries	122,261						122,261
Missions	168,455			4,574			173,029
Care		109,955					109,955
New Initiatives			-				-
Capital – Operating Expense					5,338		5,338
Depreciation						88,790	88,790
Total Expenses	1,403,279	109,955	-	4,574	5,338	88,790	1,400,885
Change in fund balances during the year	446,248	(3,656)	94,965	3,022	(5,338)	(88,790)	657,501
Capital Fund Allocation	(103,022)				103,022		-
Capital Fund Spend	(1,746)	-			1,746		-
Transfer to Special Missions Fund	(2,299)			2,299			-
Transfer to Other Funds					(80,833)	80,833	-
Capital - Property and Equipment						-	-
Fund balances, end of year	1,361,167	39,701	94,965	35,406	98,091	2,429,584	4,058,913

Bethany Chapel of Calgary

Final - AGM

General Fund

Comparison of Proposed 2025 Budget to 2024 Actual & Budget Results

	2025 Budget	Change vs 2024 Actual	2024		2023		2022		2021		2020	
			Actual	Budget	Actual	Budget	Actual	Budget	Actual	Budget	Actual	Budget
Revenues												
Contributions	1,300,000	1%	1,287,776	1,225,000	1,065,438	1,050,000	962,871	1,000,000	949,921	1,000,000	917,444	1,000,000
Gain/Loss Shares	-		-	-	(111)	-	(88)	-	33	-	(47)	-
	1,300,000	1%	1,287,776	1,225,000	1,065,327	1,050,000	962,784	1,000,000	949,954	1,000,000	917,397	1,000,000
Other Revenue												
Facility Rentals	200,000	-30%	284,314	114,000	148,630	5,200	108,645	54,000	56,092	36,000	46,520	96,000
Interest Income, Cost Recovery, Grants & Misc.	30,000	-23%	39,208	12,000	34,222	103,000	26,737	4,300	165,790	8,500	290,930	8,260
Parking Permit Sales	230,000	12%	205,557	219,000	218,519	210,200	209,360	186,700	100,668	88,148	89,897	198,800
Youth Activities and Retreats	17,100	187%	5,962	17,100	3,180	100	2,396	1,450	1,450	1,000	-	1,000
Children's Ministry	10,600	25%	8,498	12,600	13,590	9,500	4,457	4,200	2,850	1,400	-	3,200
Ministry & Outreach	16,152	5%	15,412	10,000	12,960	12,180	9,536	13,750	4,054	14,300	7,512	31,730
Other	2,820	1%	2,799	720	-	-	-	-	-	-	-	-
Preschool	-	-10%	561,750	385,420	476,307	375,680	58,634	64,965	55,938	47,180	31,661	60,761
	506,672		561,750	385,420	476,307	375,680	424,765	329,365	386,842	196,618	466,319	399,751
Revenue Available For Operations	1,806,672	-2%	1,849,526	1,610,420	1,541,634	1,425,680	1,387,548	1,329,365	1,336,796	1,196,618	1,383,716	1,399,751
Expenses												
Missions	195,000	16%	168,455	183,750	140,322	157,500	132,799	155,040	139,151	154,540	139,138	154,570
Other Expenses												
Staffing & Benefits (excluding Preschool)	1,048,389	23%	853,954	936,653	807,460	832,202	786,289	800,430	787,681	809,897	777,780	831,811
Building, Maintenance and Insurance	147,250	15%	127,933	129,900	106,312	115,063	108,801	106,701	90,642	111,020	93,796	109,220
Other, Office, Telephone, Finance	144,900	11%	130,675	125,280	123,193	103,560	64,851	65,100	55,387	75,100	54,321	83,123
Christian Education	-		-	-	2,280	-	-	-	-	-	-	-
Ministry & Outreach	40,536	23%	33,088	35,530	29,427	28,950	22,713	28,600	7,029	29,800	10,838	42,055
Worship	19,380	-9%	21,357	16,300	12,792	15,720	17,096	15,400	14,200	13,600	8,009	10,550
Youth	36,804	20%	30,566	28,240	16,620	21,600	14,545	11,860	9,326	11,545	4,077	11,545
Children's Ministry	40,232	8%	37,249	36,480	26,752	32,580	24,698	14,180	10,112	4,510	2,355	15,786
Preschool (includes payroll)	-		-	-	22,416	34,505	45,486	52,054	63,665	56,606	35,591	57,150
	1,477,441	20%	1,234,823	1,308,383	1,147,252	1,184,180	1,084,478	1,094,325	1,038,043	1,112,078	986,768	1,161,240
Total Expenses	1,672,441	19%	1,403,279	1,492,133	1,287,574	1,341,680	1,217,278	1,249,365	1,177,194	1,266,618	1,125,906	1,315,810
Excess (Deficit) before Current Year Allocations	134,231	-70%	446,248	118,287	254,060	84,000	170,271	80,000	159,602	(70,000)	257,810	83,941
Capital Fund allocation	(104,000)	1%	(103,022)	(98,000)	(85,226)	(84,000)	(77,023)	(80,000)	(75,996)	(80,000)	(73,392)	(80,000)
Capital Fund spend	-		(1,746)	-	-	-	-	-	-	-	-	-
Excess (Deficit) after Current Year Allocations	30,231	-91%	341,480	20,287	168,834	0	93,248	0	83,606	(150,000)	184,418	3,941
General Fund Reconciliation:												
General Fund Beginning of the Year	1,361,167		1,021,987	1,021,987	946,153	946,153	852,746	852,746	776,639	776,639	648,060.95	648,060.95
Excess (Deficit) before Current Year Allocations	134,231		446,248	118,287	254,060	84,000	170,271	80,000	159,602	(70,000)	257,810	80,000
Transfer to Capital Fund	-		-	-	-	-	-	-	-	-	-	-
Current Year related transfers	(104,000)		(104,768)	(98,000)	(85,226)	(84,000)	(77,023)	(80,000)	(75,996)	(80,000)	(73,392)	(80,000)
Prior Year related transfers	(9,416)		(2,299)	(19,477)	(93,000)	-	-	-	-	-	(43,340)	-
Transfer to Special Missions	-		-	-	-	-	-	-	-	-	-	-
Transfer to Other Funds	-		-	-	-	-	159	-	(7,499)	-	(12,500)	-
General Fund End of Year	1,361,981		1,361,167	1,022,797	1,021,987	946,153	946,153	852,746	852,746	626,639	776,638.80	648,061



bethanychapel.com

3333 Richardson Way SW
Calgary AB T3E 7B6